

PRODUCT QUICK GUIDE

PROCHEM

Your Source for Local Supply and Support



PIPING PRODUCTS



INSTRUMENTATION



VALVES



WATERMARK



PHARMACEUTICAL BPE



HYDRAULIC



Your Source for Local Supply and Support

Welcome to The Prochem Advantage

Prochem Pipeline Products is a leading supplier of superior piping products, mechanical instrumentation and valving solutions.

For nearly 70 years we have consistently delivered quality management, expert technical support, and a total commitment to our valued customers.

Our knowledge and expertise allow Prochem representatives to take a hands-on, individualistic approach, providing value added solutions.

Coupled with a comprehensive product range through our six stocking branches across Australia, Prochem is your local source for supply and support.

We call this, **The Prochem Advantage.**



Training

A safe operation requires; recognising hazards, using equipment "fit for purpose", understanding systems and procedures, having trained and competent staff, a thorough knowledge of emergency procedures and the ongoing monitoring of performance.

Prochem Installation Training improves the overall safety of your fluid system installations to ensure installation integrity and reliability.



Quality Management

Quality is paramount in everything we do. From selecting raw materials and buying equipment, to employing the best people and testing products prior to release.

Prochem is certified to AS/NZS/ISO 9001 Quality Management System, under Lloyd's Register of Quality Assurance. Our products are manufactured and conform to selected Australian and International standards including:

- Australian Standards: AS
- American Standards: ASTM
- British Standards: BS
- International Organisation for Standardisation: ISO



CERTIFIED QUALITY
MANAGEMENT SYSTEM
(Australia)

PIPING PRODUCTS



BSP FITTINGS



**PIPE AND TUBE
WELDED AND SEAMLESS**



SOCKETWELD FITTINGS



FLANGES



NPT FITTINGS



PIPE AND SWAGE NIPPLES



**BUTTWELD PIPE FITTINGS
WELDED AND SEAMLESS**



SAFLOK



HYGIENIC



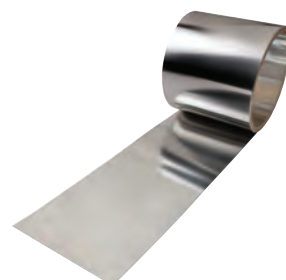
OUTLETS



**EUROPEAN STOCKED
PIPE - FITTINGS - FLANGES**



VICTAULIC



SHIM



HIGH PURITY TUBE & FITTINGS



WELDED TUBE



STRAUB



CuNi

INSTRUMENTATION



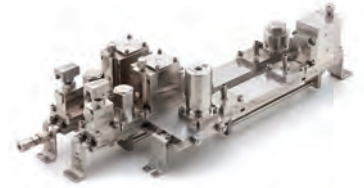
GYROLOK®



HOKE® VALVES



GO REGULATOR®



CT76 SYSTEM



CIRCLE SEAL CONTROLS®



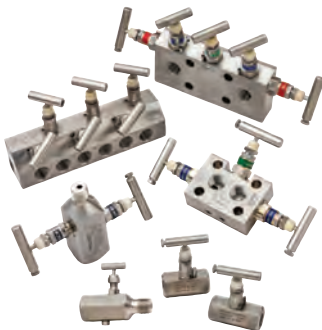
HOKE® PIPE FITTINGS



**6MO SEAMLESS TUBE &
316 SEAMLESS TUBE**



**DOPAK® SAMPLING
SYSTEMS**



**ANDERSON GREENWOOD
INSTRUMENTATION
PRODUCTS**



**ANDERSON GREENWOOD
PRIMARY ISOLATION**



CLASSIC FILTERS



BUTECH



TOOLING



**STAINLESS STEEL
BRAIDED HOSES**



**ABB LEVEL
MEASUREMENT**



**KING INSTRUMENT
COMPANY**



**ATKOMATIC® SOLENOID
VALVES**



DEKORON



FLUENTA



STAUFF

VALVES



V_ST



ATC ACTUATORS



SINGER



A-T CONTROLS



KACE



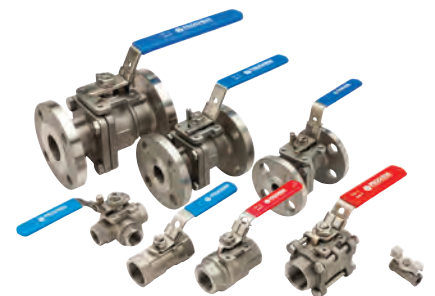
ANDERSON GREENWOOD
PRIMARY ISOLATION



CPV



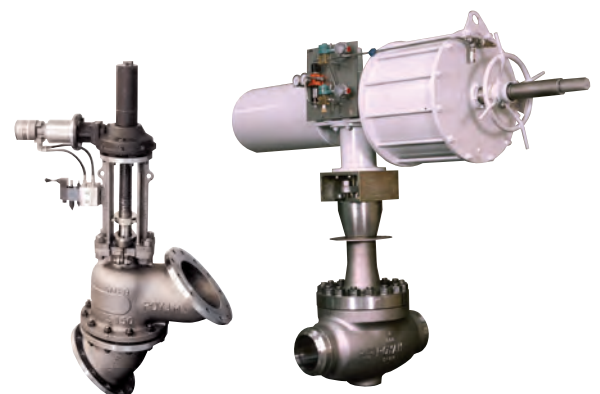
WATER MANAGEMENT



STAINLESS STEEL BALL VALVES



BONNEY FORGE



AMPO POYAM

HYDRAULIC



**TMI 37° FLARE &
RETAIN RING**



PYPLOK



CPV



JIC FITTINGS

WATERMARK



WaterMark



PHARMACEUTICAL BPE



The World of Prochem

Piping Products

Prochem Pipeline Products stock an extensive range of stainless steel and alloy piping products including:

- **Fittings**
- **Flanges**
- **Pipe**
- **Tube** and
- **Valves.**



WaterMark

At Prochem we recognise industry requirements in providing a comprehensive value added service including the supply of Pipe and Fittings. To this end, we have introduced a Stainless Steel Water Solutions Package.



Instrumentation

Prochem brings together leading manufacturers from around the world to offer a comprehensive range of quality mechanical instrumentation products.



Pharmaceutical BPE

Prochem specialises in supplying high-quality pharmaceutical pipe and fittings tailored to the stringent requirements of the pharmaceutical industry. These components are crafted to meet critical standards of hygiene, durability, and compatibility with

pharmaceutical substances.



Valves

Prochem partners with the most innovative and quality driven manufacturers to offer specialist valve and actuator supply solutions for all of your applications.



Hydraulic

Prochem Hydraulic connections range delivers a focused group of products to suit the Hydraulic industry and features world class innovative systems.





FOR FURTHER DETAILS PLEASE CONTACT YOUR LOCAL PROCHEM OFFICE

ADELAIDE & DARWIN

3A CB Fisher Drive
Cavan SA 5094
61-8-8241 7633
adesales@prochem.com.au

HOBART

96-98 Central Avenue
Derwent Park TAS 7009
61-3-6272 8828
hobsales@prochem.com.au

PERTH

6 Forge Street
Welshpool WA 6106
61-8-9458 7777
persales@prochem.com.au

BRISBANE

1-5 Kingsbury Street
Brendale QLD 4500
61-7-3265 2711
brisales@prochem.com.au

MELBOURNE

5-15 Ventura Place
Dandenong South VIC 3175
61-3-9799 2244
melsales@prochem.com.au

SYDNEY

30 Enterprise Circuit
Prestons NSW 2170
T 61-2-9727 0044
sydsales@prochem.com.au

www.prochem.com.au