

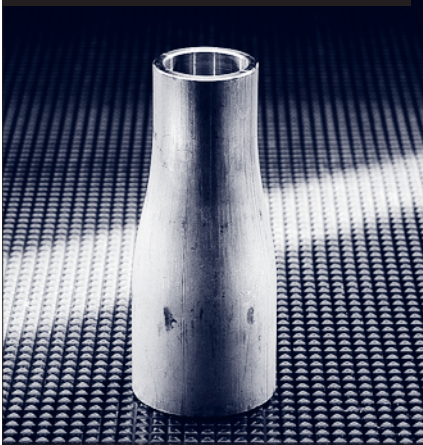
# Swage Nipples

MSS-SP-95

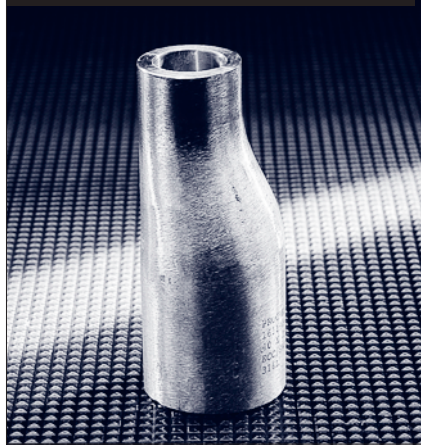
Prochem manufactures, stocks and supplies a range of plain, bevelled and threaded concentric and eccentric swage nipples, from 8 (1/4") NB through to 100 (4") NB, with other sizes available on request. All swage nipples are either manufactured from seamless pipe or bar material and have an available working pressure equivalent to straight seamless pipe.

These fittings are available in ASTM A403 WP316/316L or 304/304L materials with **other materials available on request.**

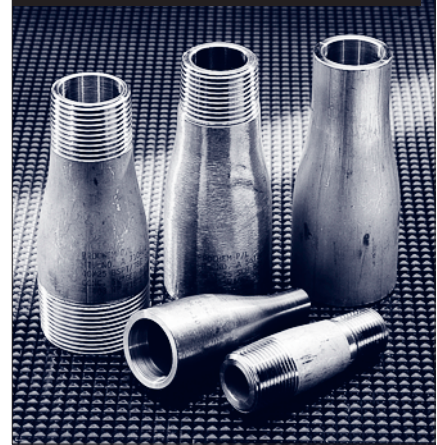
CONCENTRIC



ECCENTRIC



PLAIN & THREADED



# Pipe Nipples

AVAILABLE IN PLAIN AND THREADED BSP & NPT

Pipe nipples are available in ASTM A403 WP316/316L or 304/304L welded or seamless materials, from 6 (1/8") NB upwards, threaded BSP NPT, or plain ended. The standard length of pipe nipples is 80mm but other lengths are available upon request. **Other materials available on request.**

PLAIN



THREADED ONE END



THREADED BOTH ENDS

